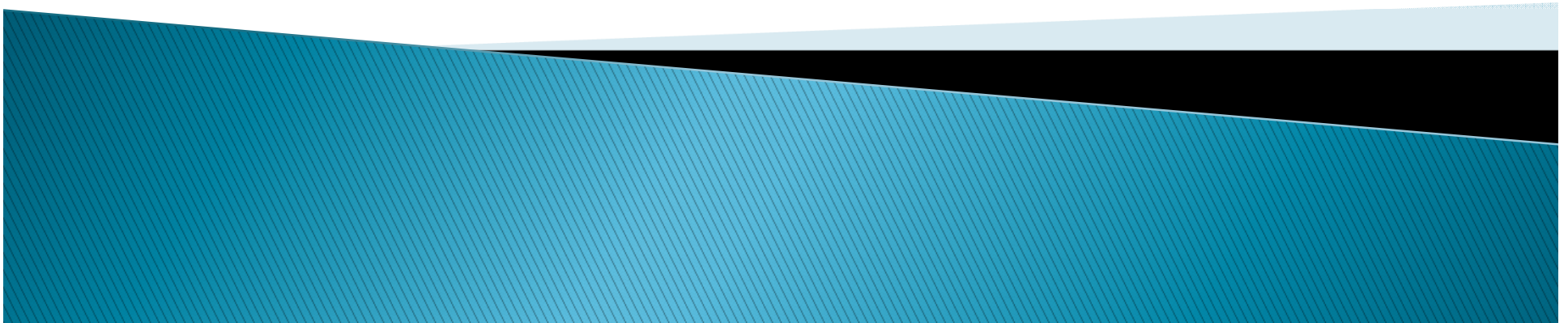




WCCUSD Bond Program Construction Update

Valley View Elementary School
Campus Replacement Project

July 15, 2014





Valley View Elementary School Campus Replacement Project Site Plan





Valley View Elementary School Campus Replacement Project Site Improvement Plan





Valley View Elementary School Campus Replacement Project Interim Housing Plan





Valley View Elementary School Campus Replacement Project Project Information



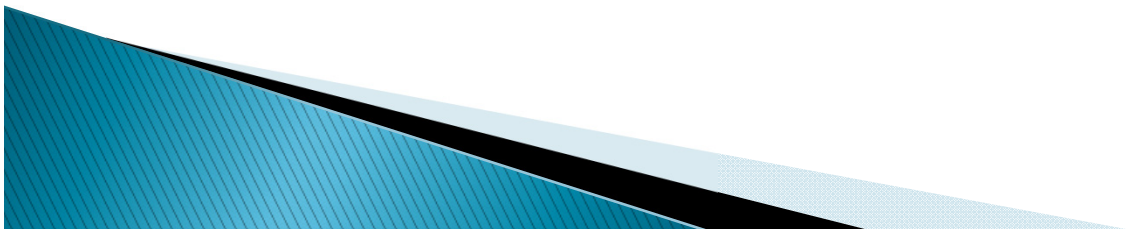
Site Area: 372,223 Square Feet

Building Area: 66,942 Square Feet

District Project Manager: Ferdinand Vergeire (WCCUSD)

Design Manager: Kent Brown (SGI)

Architect of Record: Wally Gordon (DLM Architecture)
Scott Berge

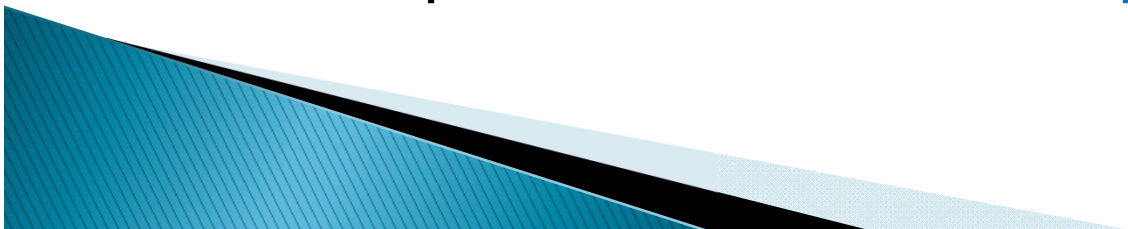




Valley View Elementary School Campus Replacement Project Proposed Schedule



▶ <u>Phase/Scope</u>	<u>Target Bid Start</u>	<u>Target Bid Due</u>
▶ Portables RFP:	July 17, 2014	Aug 12, 2014
▶ Interim Campus:	December 2014	January 2015
▶ _	Oct 7, 2014	Nov 13, 2014
▶ Abatement/Demolition:	Apr 2015	May 2015
▶ New Campus:	Sep 2015	Oct 2015



Valley View Elementary School



VIEW FROM COURTYARD



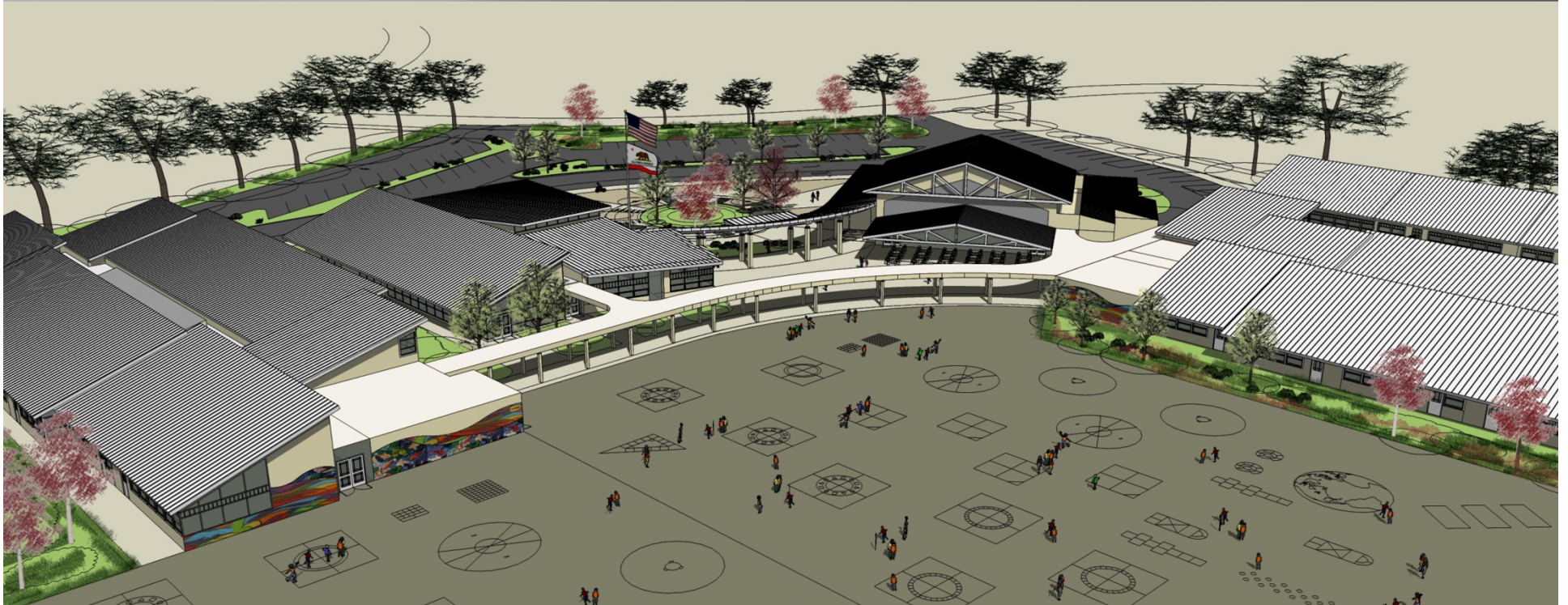
Valley View Elementary School



ENTRY VIEW



Valley View Elementary School



AERIAL VIEW TO COURTYARD



Valley View Elementary School



AERIAL VIEW TO ENTRY

